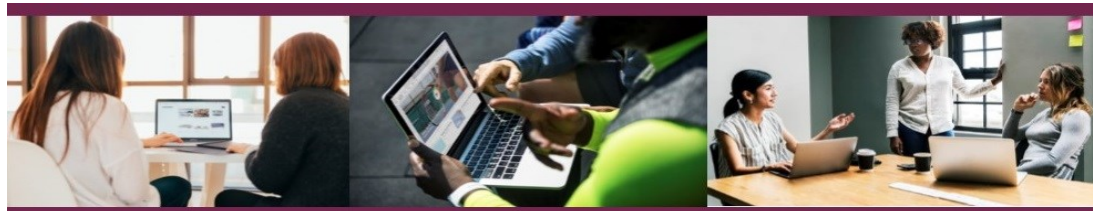


# Governor Workshops

www.leltsh-tmet.uk



## Governing Body Panels

Develop your understanding of types of panel and regulations that govern hearings

[Thursday 17th March 2022](#)

[Thursday 23rd June 2022](#)

## Effective Governance

Explore what is meant by effective governance and consider what you can do to achieve it. Also suitable for induction of new governors.

[Wednesday 4th May 2022](#)

## Holding Leaders to Account

Learn how to offer support and hold to account whilst avoiding practice that makes it more difficult for school leaders to do their job.

[Monday 6th June 2022](#)

## SEND Governors

Improve your understanding of the important statutory duties Governing Bodies have towards SEND pupils

[Monday 16th May 2022](#)

## Understanding Data

Find out what governors need to focus on and what they need to know in order to hold their school to account

[Tuesday 10th May 2022](#)

## Effective Chairing

Being a chair is a key role, providing leadership and direction. Find out how to lead effectively.

[Thursday 24th March](#)

[Monday 6th June 2022](#)

## Disadvantaged Pupils

Be clear on your role and the accountability of the Governing Body for Pupil Premium and other external funding

[Monday 4th April 2022](#)

## Safeguarding for Governors

Understand your duty to monitor and evaluate your school's safeguarding policies & procedures

[Monday 13th June 2022](#)

## Active Governance

Be an active governor and participate effectively in the governance of your school

[Thursday 31st March](#)

[Wednesday 29th June 2022](#)

## Governing Body Self Reviews

Find out how self evaluation can improve individual and team effectiveness.

[Monday 25th April](#)

[Tuesday 28th June 2022](#)

## Governors and the Curriculum

Find out how to determine if your school curriculum is balanced and broadly based.

[Tuesday 29th March](#)

[Tuesday 14th June 2022](#)

## Preparing for Ofsted

Learn how Ofsted will inspect governance and what your role is as a governor

[Tuesday 8th March](#)

[Tuesday 24th May 2022](#)

All workshops will be

**Online**

(interactive)

and will run

from

5.45 to 7.30pm

with optional

Q&A from

7.30 to 7.45pm

~

**£30**

per workshop

Please use our online system to book places or find further info - click on the date links or visit

[bookwhen.com/teachingschool](http://bookwhen.com/teachingschool)

Leicester & Leicestershire Teaching School Hub

Tel: 0116 2689727

Email: [tshub@leltsh-tmet.uk](mailto:tshub@leltsh-tmet.uk)

