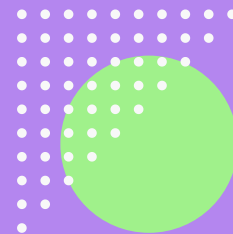


UPCOMING CPLD



Inclusion & SEND Hub Training Offer - Spring 2024

The Engagement Model

The Engagement Model is a statutory assessment tool that helps schools meet their duties in supporting pupils who are working below the level of the national curriculum and who are not engaged in subject-specific study. Delivered by Ellen Croft, DfE Engagement Model Lead Trainer.

Spring 2024

1pm - 4pm, Online or Face to Face
£150pp

Sensory Learning

To support staff working with pupils with complex SEN to create a more inclusive sensory learning environment to develop speech, language and communication. This workshop style training will provide delegates with hands on knowledge underpinned by research.

25th Jan, 8th Feb & 29th Feb 2024

1pm - 4pm, Ash Field Academy
£225pp

Moving & Handling

A certified course providing essential training in the safe procedures for the moving and handling of people. Facilitated by Institution of Occupation Safety and Health (IOSH) approved trainers.

5th Mar 2024

9.30am - 3pm, Ash Field Academy
£150pp

Graduated Approach

This training examines the 4 elements of the Graduated Approach cycle and the statutory duty placed on teachers to meet the needs of all learners. Delivered by Lynsey O'Keeffe, Inclusion and SEND Hub - Assistant Director

12th March 2024

9.30am - 12.30pm, Ash Field Academy
£75pp

[BOOK HERE](#)

More Information:



0116 2737151

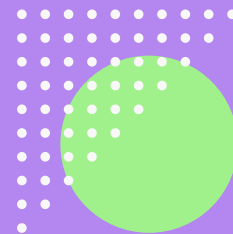


bookwhen.com/inclusionsendhub



isendhub@ashfield.leicester.sch.uk





ENGAGEMENT MODEL TRAINING

MONDAY 15TH JAN & MONDAY 5TH FEB 2024
1PM - 4PM

‘The Engagement Model’ is an assessment tool that helps schools meet their duties in supporting pupils who are working below the level of the national curriculum and who are not engaged in subject-specific study. ‘The Engagement Model’ became statutory from September 2021, replacing P scales 1 to 4.

Outcomes

- The training consists of 2 sessions aimed at helping schools and authorities to understand and embed the model
- Session 1: Understanding the Engagement Model and the use of observations, policy & CPD
- Session 2: Plan, Do, Review & Reporting and Accountability

Facilitator: Ellen Croft, Director of The Inclusion & SEND Hub & SEND SLE

Venue: Online via Zoom

Cost: £150

[BOOK HERE](#)

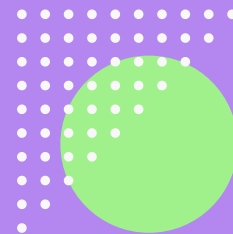
More Information:

📞 0116 2737151

🌐 bookwhen.com/inclusionsendhub

✉ isendhub@ashfield.leicester.sch.uk





ENGAGEMENT MODEL TRAINING

WEDNESDAY 28TH FEB & WEDNESDAY 13TH MAR 2024
1PM - 4PM

‘The Engagement Model’ is an assessment tool that helps schools meet their duties in supporting pupils who are working below the level of the national curriculum and who are not engaged in subject-specific study. ‘The Engagement Model’ became statutory from September 2021, replacing P scales 1 to 4.

Outcomes

- The training consists of 2 sessions aimed at helping schools and authorities to understand and embed the model
- Session 1: Understanding the Engagement Model and the use of observations, policy & CPD
- Session 2: Plan, Do, Review & Reporting and Accountability

Facilitator: Ellen Croft, Director of The Inclusion & SEND Hub & SEND SLE

Venue: Ash Field Academy, LE5 4PY

Cost: £150

[BOOK HERE](#)

More Information:

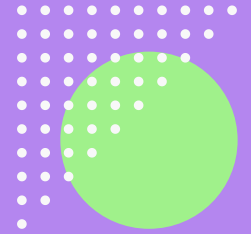
📞 0116 2737151

🌐 bookwhen.com/inclusionsendhub

✉ isendhub@ashfield.leicester.sch.uk



SENSORY LEARNING



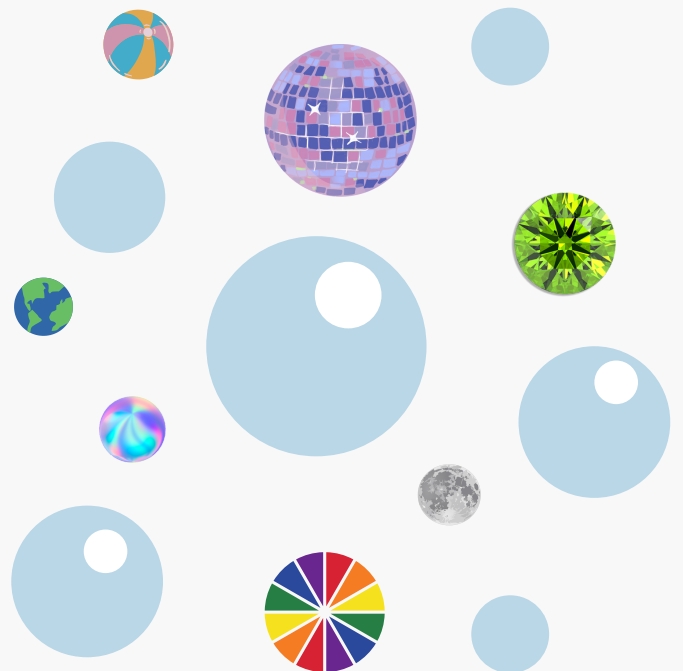
An inclusive approach to developing speech, language and communication through sensory environments

THURSDAY 25TH JANUARY 2024, 1PM - 4PM
THURSDAY 8TH FEBRUARY 2024, 1PM - 4PM
THURSDAY 29TH FEBRUARY 2024, 1PM - 4PM

To support staff working with pupils with complex SEN to create a more inclusive sensory learning environment to develop speech, language and communication. This workshop style training will provide delegates with hands on knowledge underpinned by research.

Workshop Activities Include:

- A tour of a specialist school with a focus on 'sensory spaces' including completing a sensory environmental audit.
- Gain an understanding of what learning and progress looks like in a sensory and communication rich environment including sensory rooms, soft play and classroom spaces.
- Creating a sensory story based on an upcoming theme in your school.



We aim for this course to skill professionals to support a pupil to:

- Develop a sense of belonging
- Express their wants and needs
- Understand the world around them
- Develop autonomy

Session 1

To gain understanding, confidence and the skills to:

- Create an inclusive classroom culture
- Identify sensory barriers to learning and how it may affect a pupil's development of speech, language and communication.
- Experience sensory environments through the 'eyes of a child' and understand the impact of this on pupils' learning and progress.

Session 2

To gain understanding, confidence and the skills to:

- Plan, deliver and assess a personalised sensory curriculum with a focus on speech, language and communication.
- Create a sensory environment conducive to learning.

Session 3

To gain understanding, confidence and the skills to:

- Create a sensory story related to themes in your school.
- Create sensory stories to develop speech, language and communication.

Developed by: Sam Lemmon, Assistant Headteacher - PMLD Specialist & Ellen Croft, Director Inclusion and SEND Hub

Facilitator: Sam Lemmon, Assistant Headteacher – PMLD Specialist

Venue: Ash Field Academy, LE5 4PY

Cost: £225 - includes a pack of sensory learning teaching ideas

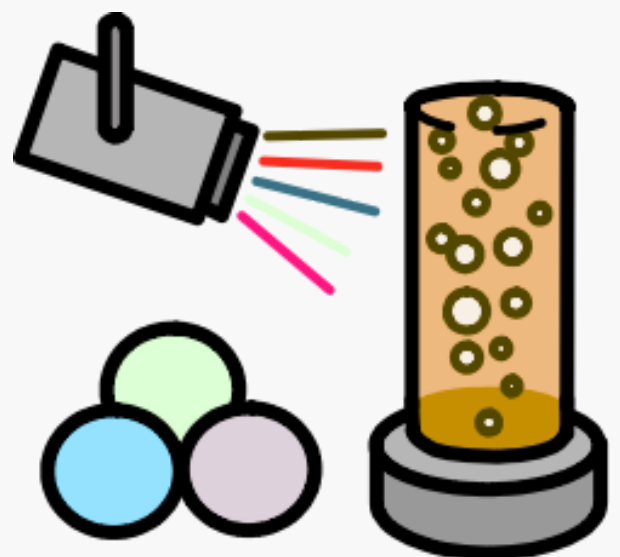
[BOOK HERE](#)

More Information:

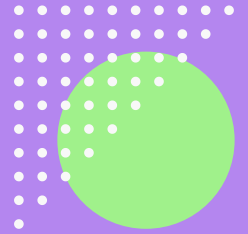
☎ 0116 2737151

🌐 bookwhen.com/inclusionsendhub

✉ isendhub@ashfield.leicester.sch.uk



MOVING & HANDLING TRAINING



TUESDAY 5TH MARCH 2024, 9.30AM-3PM

A certified course providing essential training in the safe procedures for the moving and handling of people

- An overview of current legislation concerning health and safety surrounding moving and handling
- A demonstration of safe moving and handling techniques
- A practical session including the use of hoists and slings
- Upon successful completion of the course a certificate will be issued
- Moving and handling training must be updated every 12 months

Facilitators: Philippa Elliott, Sam Simpson & Bev Snow - Institution of Occupation Safety and Health (IOSH) approved trainers

Venue: Ash Field Academy, LE5 4PY

Cost: £150

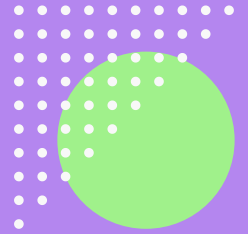
[BOOK HERE](#)

More Information:

- 📞 0116 2737151
- 🌐 bookwhen.com/inclusionsendhub
- ✉ isendhub@ashfield.leicester.sch.uk



GRADUATED APPROACH TRAINING



**TUESDAY 12TH MARCH 2024
9.30AM - 12.30PM**

This training examines the 4 elements of the Graduated Approach cycle and the statutory duty placed on teachers to meet the needs of all learners.

We will look at how High-Quality Teaching fits into the cycle and how to use the approach to ensure all pupils get the right support at the right time.

There will be opportunities to review your setting's current practice in light of ever-increasing demands on school resources and opportunities to share best practice and network with colleagues.


Facilitator: Lynsey O'Keeffe, Assistant Director of iSENDHub

Venue: Ash Field Academy, LE5 4PY

Cost: £75

[BOOK HERE](#)

More Information:

 0116 2737151

 bookwhen.com/inclusionsendhub

 isendhub@ashfield.leicester.sch.uk

