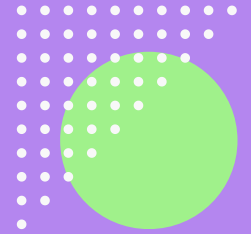


GRADUATED RESPONSE TRAINING



TUESDAY 5TH DECEMBER 2023
9.30AM - 12.30PM

This training examines the 4 elements of the Graduated Approach cycle and the statutory duty placed on teachers to meet the needs of all learners.

We will look at how High-Quality Teaching fits into the cycle and how to use the approach to ensure all pupils get the right support at the right time.

There will be opportunities to review your setting's current practice in light of ever-increasing demands on school resources and opportunities to share best practice and network with colleagues.

Facilitator: Lynsey O'Keeffe, Assistant Director of iSENDHub

Venue: Ash Field Academy, LE5 4PY

Cost: £75

[BOOK HERE](#)

More Information:

 0116 2737151

 bookwhen.com/inclusionsendhub

 isendhub@ashfield.leicester.sch.uk

