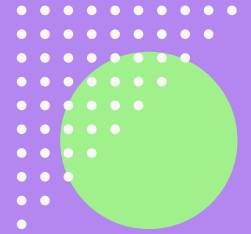


# UPCOMING CPLD



## Inclusion & SEND Hub Training Offer

### Graduated Response

This training examines the 4 elements of the Graduated Approach cycle and the statutory duty placed on teachers to meet the needs of all learners.

Delivered by Lynsey O'Keeffe,  
Inclusion and SEND Hub - Assistant Director

5th Dec 2023

9.30am - 12.30pm, Ash Field Academy  
£75pp

### The Engagement Model

The Engagement Model is a statutory assessment tool that helps schools meet their duties in supporting pupils who are working below the level of the national curriculum and who are not engaged in subject-specific study.

Delivered by Ellen Croft, DfE Engagement Model Lead Trainer.

Spring 2024

1pm - 4pm, Online or Face to Face  
£150pp

### Sensory Learning

To support staff working with pupils with complex SEN to create a more inclusive sensory learning environment to develop speech, language and communication. This workshop style training will provide delegates with hands on knowledge underpinned by research.

25th Jan, 8th Feb & 29th Feb 2024

1pm - 4pm, Ash Field Academy  
£225pp

### Moving & Handling

A certified course providing essential training in the safe procedures for the moving and handling of people.

Facilitated by Institution of Occupation Safety and Health (IOSH) approved trainers.

5th Mar 2024

9.30am - 3pm, Ash Field Academy  
£150pp

[BOOK HERE](#)

### More Information:

 0116 2737151

 [bookwhen.com/inclusionsendhub](https://bookwhen.com/inclusionsendhub)

 [isendhub@ashfield.leicester.sch.uk](mailto:isendhub@ashfield.leicester.sch.uk)

