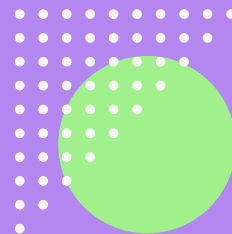


UPCOMING CPLD



Inclusion & SEND Hub Training Offer

SEND in the Mainstream

The 'SEND in the Mainstream' training is structured around the EEF 'SEND in the Mainstream' guidance and the 5 recommendations set out within it to support primary and secondary schools seeking to improve their provision for pupils with SEND.

2nd, 16th & 30th Nov 2023

3.30pm - 5pm, via Zoom

The Engagement Model

The engagement model is an assessment tool that helps schools meet their duties in supporting pupils who are working below the level of the national curriculum and who are not engaged in subject-specific study. Delivered by Ellen Croft, DfE Engagement Model Lead Trainer.

6th & 20th Nov 2023

1pm - 4pm, via Zoom

Sensory Learning

To support staff working with pupils with complex SEN to create a more inclusive sensory learning environment to develop speech, language and communication. This workshop style training will provide delegates with hands on knowledge underpinned by research.

25th Jan, 8th Feb & 29th Feb 2024

1pm - 4pm, Ash Field Academy

Moving & Handling

A certified course providing essential training in the safe procedures for the moving and handling of people. facilitated by Institution of Occupation Safety and Health (IOSH) approved trainers.

5th Mar 2024

9.30am - 3pm, Ash Field Academy

BOOK HERE

More Information:



0116 2737151



bookwhen.com/inclusionsendhub



isendhub@ashfield.leicester.sch.uk

