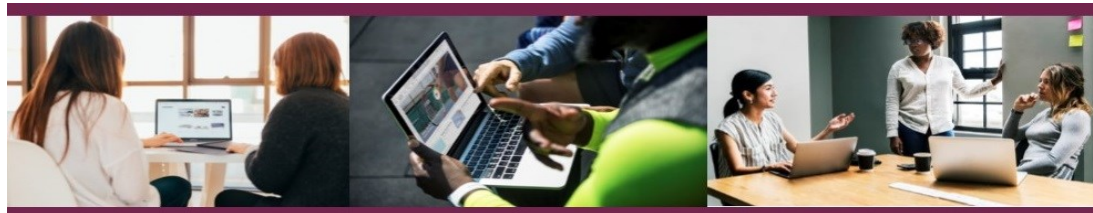


Governor Workshops

www.leltsh-tmet.uk



Governing Body Panels

Develop your understanding of types of panel and regulations that govern hearings.

[Thursday 9th February 2023](#)

[Tuesday 13th June 2023](#)

Effective Governance

Explore what is meant by effective governance and consider what you can do to achieve it. Also suitable for induction of new governors.

Tuesday 8th November 2022

[Tuesday 28th February 2023](#)

Holding Leaders to Account

Learn how to offer support and hold to account whilst avoiding practice that makes it more difficult for school leaders to do their job.

[Tuesday 29th November 2022](#)

[Thursday 30th March 2023](#)

SEND Governors

Improve your understanding of the important statutory duties Governing Bodies have towards SEND pupils

[Monday 16th January 2023](#)

[Monday 15th May 2023](#)

Understanding Data

Find out what governors need to focus on and what they need to know in order to hold their school to account

[Monday 13th February 2023](#)

[Tuesday 25th April 2023](#)

Effective Chairing

Being a chair is a key role, providing leadership and direction. Find out how to lead effectively.

Thursday 10th November 2022

[Wednesday 22nd March 2023](#)

Disadvantaged Pupils

Be clear on your role and the accountability of the Governing Body for Pupil Premium and other external funding

[Monday 9th January 2023](#)

[Monday 5th June 2023](#)

Safeguarding for Governors

Understand your duty to monitor and evaluate your school's safeguarding policies & procedures

[Monday 21st November 2022](#)

[Monday 17th April 2023](#)

Active Governance

Be an active governor and participate effectively in the governance of your school

[Wednesday 1st February 2023](#)

[Thursday 22nd June 2023](#)

Governing Body Self Reviews

Find out how self evaluation can improve individual and team effectiveness.

[Tuesday 13th December 2022](#)

[Wednesday 3rd May 2023](#)

Governors and the Curriculum

Find out how to determine if your school curriculum is balanced and broadly based.

[Monday 30th January 2023](#)

[Monday 22nd May 2023](#)

Preparing for Ofsted

Learn how Ofsted will inspect governance and what your role is as a governor

Wednesday 16th November 2022

[Tuesday 14th March 2023](#)

All workshops
will be

Online

(interactive)

and will run

from

5.45 to 7.30pm

with optional

Q&A from

7.30

~

£30

per workshop

Please use our
online system to
book places or
find further info
- click on the
date links or
visit

[bookwhen.com
/teachingschool](https://bookwhen.com/teachingschool)

Leicester &
Leicestershire
Teaching School
Hub

Tel:
0116 2689727

Email:
[tshub@leltsh-
tmet.uk](mailto:tshub@leltsh-tmet.uk)

